

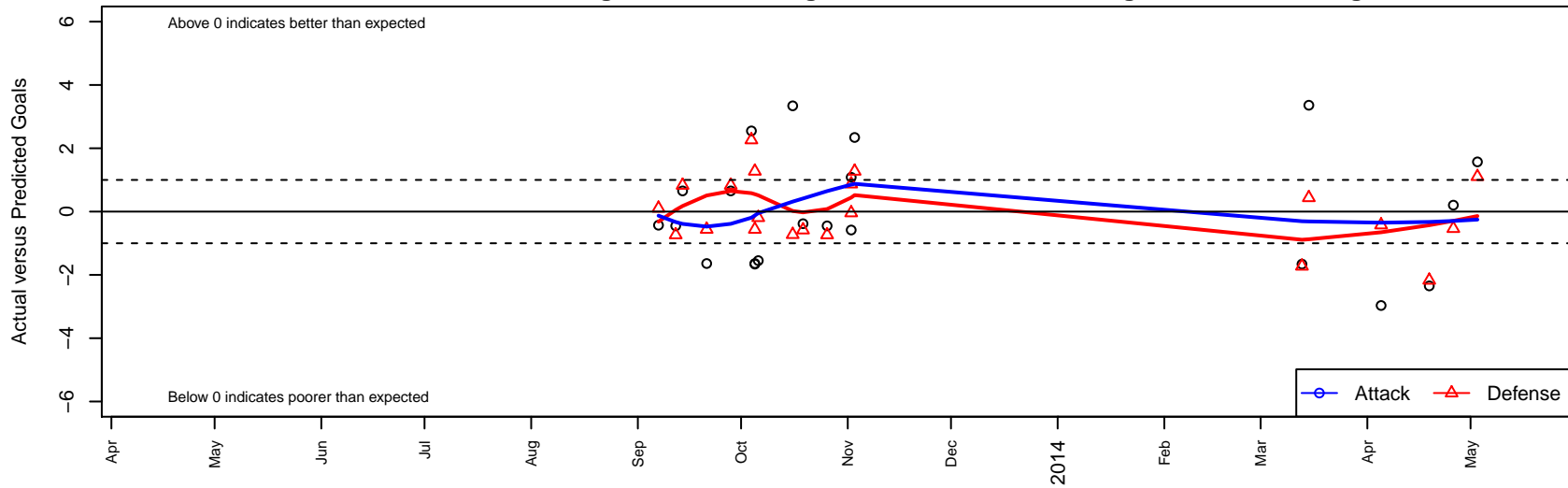
Neto United B99

, ID
 B99 total strength=1095
 attack=4.22 defense=1.84
 fall league = Idaho D3 Division 2 U14, Spr Idah
 notes= Franca 2013
 alt names used:
 NETO UNITED

Venues played:
 Idaho D3 Division 2 U14
 GEM State Challenge U13/U14B U13
 FC Nova Fall Showcase U14/U15B King U15
 Spr Idaho D3 U14 Boys Division 2 U14



Neto United B99
 Dots are actual minus expected GF (blue circles) and GA (red triangles).
 Blue line is smoothed change in attack strength. Red is smoothed change in defense strength.



	date	home		away		venue	pred.home	pred.away
27087	2014-05-03	Neto United B99	6	Real Middleton Vikings B99	0	Spr Idaho D3 U14 Boys Division 2 U14	4.43	1.10
26823	2014-04-26	Sawtooth United B99	2	Neto United B99	6	Spr Idaho D3 U14 Boys Division 2 U14	1.46	5.80
26623	2014-04-19	Mountain Home SC United B99	3	Neto United B99	3	Spr Idaho D3 U14 Boys Division 2 U14	0.83	5.35
25758	2014-04-05	Twin Falls Rapids B99	2	Neto United B99	1	Spr Idaho D3 U14 Boys Division 2 U14	1.58	3.97
24712	2014-03-15	Idaho Rush Azul B99	1	Neto United B99	6	Spr Idaho D3 U14 Boys Division 2 U14	1.44	2.64
24388	2014-03-13	Neto United B99	2	Boise Nationals Hotspur B99	3	Spr Idaho D3 U14 Boys Division 2 U14	3.66	1.27
17328	2013-11-03	Neto United B99	6	Boise Nationals Hotspur B99	0	FC Nova Fall Showcase U14/U15B King U15	3.66	1.27
16990	2013-11-02	Neto United B99	2	FC Nova SuperNova Black B98	3	FC Nova Fall Showcase U14/U15B King U15	0.92	3.87
16991	2013-11-02	Neto United B99	0	Idaho Torrent B98	6	FC Nova Fall Showcase U14/U15B King U15	0.58	5.96
16002	2013-10-26	Neto United B99	1	Idaho Rush Nero B99	3	Idaho D3 Division 2 U14	1.45	2.26
15067	2013-10-19	Nationals West Vipers B99	3	Neto United B99	1	Idaho D3 Division 2 U14	2.42	1.38
14697	2013-10-16	Neto United B99	7	Boise Nationals Hotspur B99	2	Idaho D3 Division 2 U14	3.66	1.27
13310	2013-10-06	Neto United B99	1	FC Nova White B00	1	GEM State Challenge U13/U14B U13	2.55	0.81
12890	2013-10-05	Boise Nationals Hotspur B99	0	Neto United B99	2	GEM State Challenge U13/U14B U13	1.27	3.66
12893	2013-10-05	Idaho Rush Azul B99	2	Neto United B99	1	GEM State Challenge U13/U14B U13	1.44	2.64
12601	2013-10-04	Idaho Rush Nero B99	0	Neto United B99	4	GEM State Challenge U13/U14B U13	2.26	1.45
12047	2013-09-28	Neto United B99	6	Mountain Home SC United B99	0	Idaho D3 Division 2 U14	5.35	0.83
11112	2013-09-21	Idaho Rush Azul B99	2	Neto United B99	1	Idaho D3 Division 2 U14	1.44	2.64
10132	2013-09-14	Mountain Home SC United B99	0	Neto United B99	6	Idaho D3 Division 2 U14	0.83	5.35
9766	2013-09-12	Idaho Rush Nero B99	3	Neto United B99	1	Idaho D3 Division 2 U14	2.26	1.45
9185	2013-09-07	Neto United B99	4	Real Middleton Vikings B99	1	Idaho D3 Division 2 U14	4.43	1.10